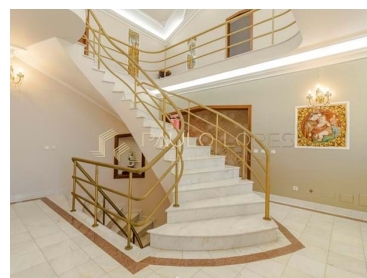




Coz, Alpedriz e Montes - Villa



5 Bedrooms
5 Bathrooms
510 Area (m²)
680 Land Area (m²)
Garage



325 000 €
(EUR €)

Detached House with Luxury finishes

There are villas that stand out, it is the case of this villa that for its refinement and quality of construction stands out much more. The Italian gold-plated faucets in one of the 3 suites The mosaics designed by renowned designer Ana Salazar The luxurious gold-and-crystal ceiling chandelier of the Atlantis brand The beautiful interior staircase in marble, in imperial style The excellent areas in all rooms. These among many other details that make this property an excellent opportunity. The

villa is located a-
 10 kilometers from the beach of the walls victoria-
 15 Km from Nazaré



Paulo Lopes

paulo.lopes@safti.pt

T +351 916 034 111 ² · E paulo.lopes@safti.pt
Avenida António Augusto de Aguiar, 136, 9º 1050-078 Lisboa
AMI 17184

¹ (Call to national fixed network) | ² (Call to national mobile network)



- 7 kilometers from the highway

The property consists of two buildings being one residential and the other annex that allows use as a second garage or ballroom,.

As for the villa consists of 3 floors, and divided as follows.

In the Basement with access through the garage area we can find:-

Garage for 3 cars-

Kitchen with living room in open space (equipped kitchen and with fireplace for space heating)- 1 interior bedroom- 1

office space that can be converted into a bedroom

- 1 service bathroom.

Ground floor through the main entrance, we come across some beautiful imperial style stairs adorned by a large gold-plated chandelier adorned with atlantis crystal. On this floor we can find:-

Large living room with other access to the outside and two balconies- 1 presidential bedroom with large area and balcony, as well as private bathroom adorned with Italian gold plated faucets and mosaic walls by the renowned stylist Ana Salazar- 2 spacious bedrooms with private bathroom all with balcony (one of the bedrooms with large built-in wardrobe)

On the upper floor where the staircase ends, You can find all around:

- Circulation space with a door access to a good balcony to the front of the property.
- Access doors to a lot of extra space that can give you an excellent use.

In the outdoor space all around the villa has in synthetic garden without requiring any maintenance, as well as a patio where you can build a swimming pool.

As for the annex, this has a large lounge with equipped kitchen and bathroom service. In the exterior has a barbeque and wood oven

The villa is equipped with diesel central heating, has a quality of extreme construction and alarm. An excellent opportunity for those looking for a villa with exclusive details and good taste.



Paulo Lopes

paulo.lopes@safti.pt

T +351 916 034 111 ² · E paulo.lopes@safti.pt
Avenida António Augusto de Aguiar, 136, 9º 1050-078 Lisboa
AMI 17184

¹ (Call to national fixed network) | ² (Call to national mobile network)



Property Features

- Heating
- Fitted wardrobes
- Equipped kitchen
- Proximity: Airport, Mountain, Beach
- Terrace
- Laundry
- Basement
- Security alarm
- Double glazing
- Pantry
- Gym
- Barbecue
- Energetic certification: D
- Mains water
- Washing machine
- Fireplace
- Safe
- Garden
- Garage
- Drive way
- Storage / utility room
- Guest cottage
- Electric garage gate
- Quiet Location
- Closed fireplace
- Sealed land area
- Solar orientation: South
- Balcony



Paulo Lopes

paulo.lope@safte.pt

T +351 916 034 111 ² · E paulo.lope@safte.pt
Avenida António Augusto de Aguiar, 136, 9º 1050-078 Lisboa
AMI 17184

¹ (Call to national fixed network) | ² (Call to national mobile network)